


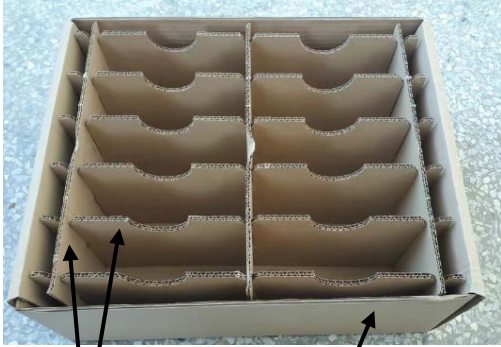




# Environmental labeling of packaging material(94/62/EC)

version: 01

Date of establishment:12/21/2022

 <p><b>PP 5</b> Strapping (yellow)</p> <p><b>PAP 20</b> Outer box</p>	 <p><b>PAP 20</b> Inner box 1</p>
 <p><b>PAP 21</b> Inner box 2</p>	 <p><b>PAP 20</b> Paper card</p> <p><b>PAP 20</b> Paper box3</p>
 <p><b>PAP 20</b> Clapboard</p>	 <p><b>LDPE 4</b> Product packaging bags</p>



**PAP 20**

Product box



**LDPE 4**

Packaging tape



**PAP 22**

Label / Stickers



**LDPE 4**

Saran Wrap

**PP 5**

Pallets



**PP 5**

Strapping(white)

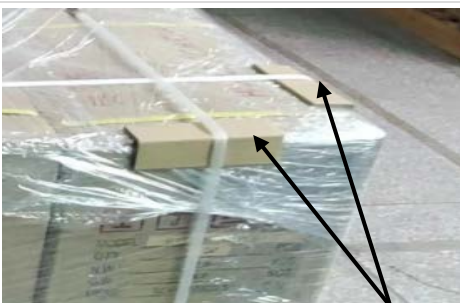


**PP 5**

Strapping(white)

**FE 40**

Metal buckle



**PAP 21**

Corner guard

