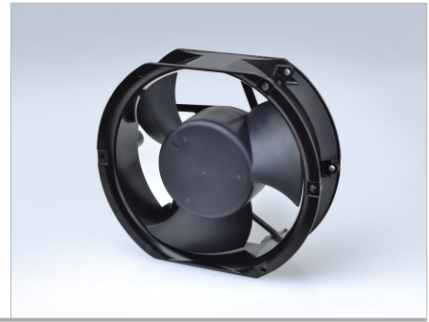


# 1751-3

172x150x51mm (6.77x5.91x2.00 in) - 3 blade



- Bearing System----- 2 Ball Bearing,
- Life Expectancy----- Ball 100000hrs @ 4500RPM @ 30°C
- Frame----- Aluminum
- Impeller----- Thermoplastic PBT+15% GF, UL94-V0
- Lead Wire ----- UL 1007, AWG 22, 220 ± 10mm, Red(+), Black(-)
- Protection ----- Locked rotor protection
- IP Grade ----- IP51, IP54, IP56, IP67



IATF 16949:2016  
ISO 9001:2015  
ISO 14001:2015



Dim: 450x380x360mm  
N.W.: 15.6 kgs  
G.W.: 17.9 kgs  
Q' TY: 20 pcs

FUNCTIONS	PART NUMBER	RATED (VDC)	LABEL CURRENT	ACTUAL CURRENT	POWER (WATTS)	SPEED (RPM)	AIRFLOW (CFM)(m³/min)		PRESSURE (mmAq)(In H <sub>2</sub> O)		NOISE (dBA)	WEIGHT (Q'TY/CTN)
1a:IR 1b:AS 2a:FG 2b:RD 2c:RDb 2d:LD 2e:LDb 3a:VPWM 3b:IPWM 3c:PPWM 5a:TPWM 6a:RPWM 7a:CS	P1751H12BALAxy-3	12 (08~14)	3.200	3.000	36.00	4500	310.45	8.79	28.40	1.12	62.70	781g (20pcs)
	P1751M12BALAxy-3		2.600	2.400	28.80	4000	275.95	7.81	22.44	0.88	59.60	
	P1751L12BALAxy-3		1.700	1.500	18.00	3500	241.46	6.84	17.18	0.68	57.10	
	P1751Z24BALAxy-3	24 (15~27)	4.000	3.300	79.20	6000	413.93	11.72	50.48	1.99	70.10	781g (20pcs)
	P1751Y24BALAxy-3		2.800	2.500	60.00	5500	379.44	10.74	42.42	1.67	68.00	
	P1751X24BALAxy-3		2.200	2.000	48.00	5000	344.94	9.76	35.06	1.38	65.20	
	P1751H24BALAxy-3		1.600	1.500	36.00	4500	310.45	8.79	28.40	1.12	62.70	
	P1751M24BALAxy-3		1.260	1.100	26.40	4000	275.95	7.81	22.44	0.88	59.60	
	P1751L24BALAxy-3		0.850	0.750	18.00	3500	241.46	6.84	17.18	0.68	57.10	
	P1751Z48BALAxy-3	48 (36~57)	2.000	1.680	80.64	6000	413.93	11.72	50.48	1.99	70.10	781g (20pcs)
	P1751Y48BALAxy-3		1.400	1.300	62.40	5500	379.44	10.74	42.42	1.67	68.00	
	P1751X48BALAxy-3		1.050	0.950	45.60	5000	344.94	9.76	35.06	1.38	65.20	
	P1751H48BALAxy-3		0.800	0.730	35.04	4500	310.45	8.79	28.40	1.12	62.70	
	P1751M48BALAxy-3		0.600	0.520	24.96	4000	275.95	7.81	22.44	0.88	59.60	
	P1751L48BALAxy-3		0.420	0.370	17.76	3500	241.46	6.84	17.18	0.68	57.10	

Remark:

1. Part no. suffix: "xy" =Function detail or "x" =Function number. and "y" =customer ID
2. P series - Multifunction Extra High Performance series:  
Uses a single coil differential type drive with higher efficiency and performance, for higher power demanding applications offering the complete line of functions.

